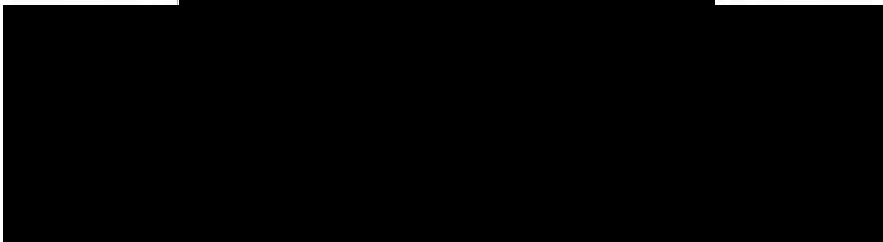
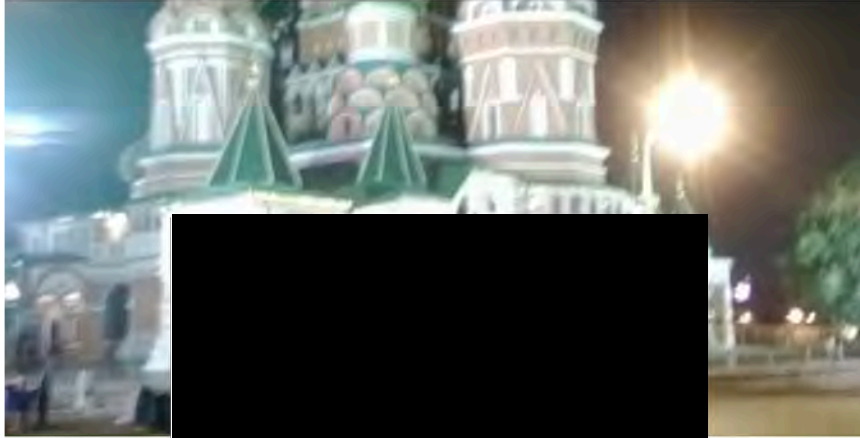
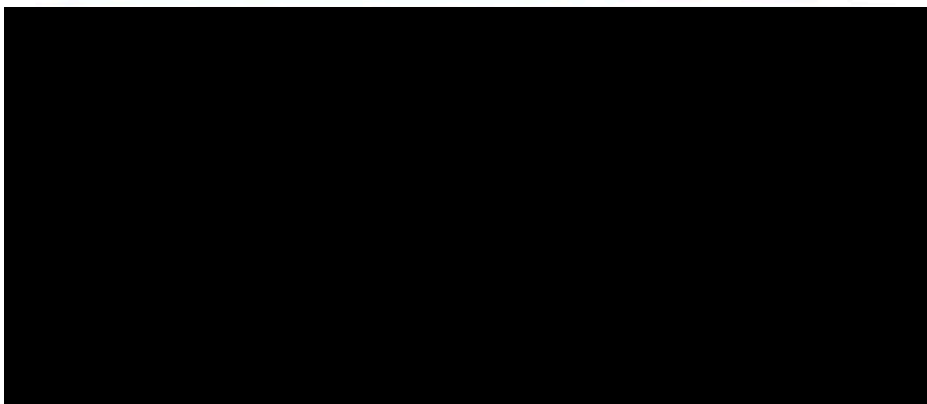


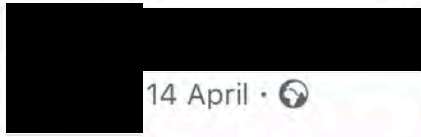
11:25



 Add Friend



11:03 ↗




14 April · 🌐

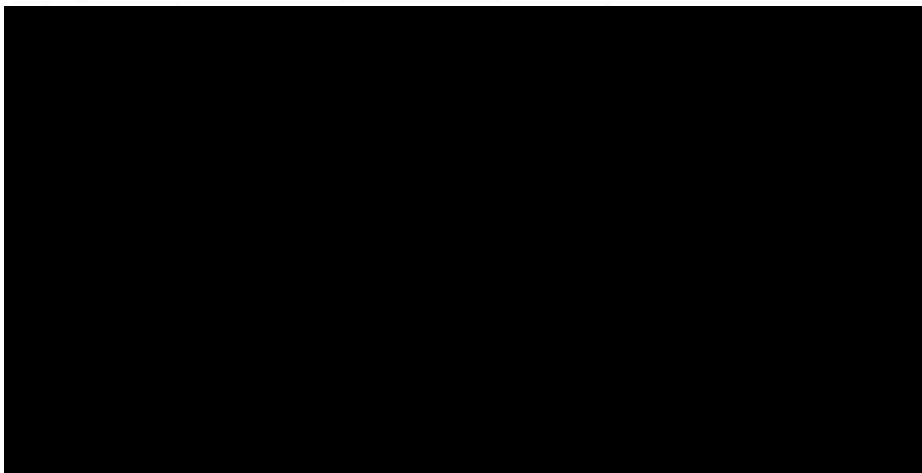


**Good morning everybody.  
Today I am going out with  
the Saturday Walkers  
Club London. And we are  
going to Shoreham, Kent.**

 Like

 Share

 4



11:05



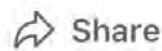
14 April · 🌐



Today I went out with the Saturday Walkers Club London. And we started from Shoreham Kent. And approximately 11 of us turned up on the day. During the Walk. We went through Shoreham. Until we went through the Countryside. And we had to Walk along a Public Footpaths where the Golf Course is. Not only that. We went to Lullingston Castle. Not only that. We had a look around St Bololphs Church close to the Castle as well. Then 4 of us continued Walking. Then 2 people went Home early. Because 1 of them had to be in a Meeting. And 2. This Maturated Chinese Woman or Asian Woman was suffering with something. While me and this Maturated Woman stopped to have our packed Lunch outside a Church as soon as we got back to Shoreham. Then we continued Walking. But during the Walk. The instructions of where we were supposed to go were Quite confusing. But we tried our best. Then later on. We went through Otford. While my Mother calls me. Then we continue Walking. But the instructions were still confusing. So we Walked along the Road going back to Shoreham one more time. This time we went back to the Railway Station. This was after 16:00. And we caught the Train at 16:08.



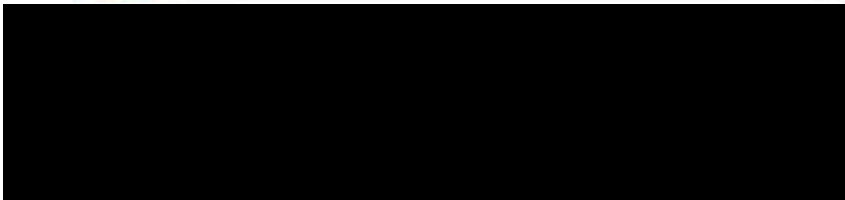
Like



Share



4



5 w Like



9+

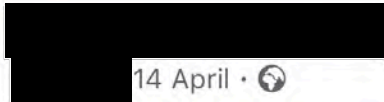


11:05



Like

Share



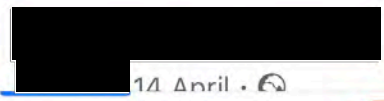
14 April

The day out with the Saturday Walkers Club London.  
From Shoreham Railway Station. Part 1:



Like

Share



14 April







14 APRIL

Like

Share



14 APRIL

1

Like

Share

